

# HiFi PiG MAGAZiNE

## ESSENTiAL HiGH END MUNiCH 2022

WIN AN AVID-HIFI TURNTABLE  
IN OUR FREE TO ENTER  
COMPETITION  
SEE INSIDE FOR DETAILS

FOREWORD BY  
**Stefan Dreischärf - High End Society**

 **HIGH END**<sup>®</sup>  
munich2022

MAY 19 TO 22, AT THE MOC MUNICH

ADVERTISING PROMOTION



## FOREWORD

Stefan Dreischärf - High End Society

## Stefan Dreischärf - High End Society

**T**his year, I am especially pleased to welcome you to Munich at the HIGH END 2022. After all, as organisers, we have not been the only ones excitedly looking forward to this important date, bringing together exhibitors, visitors, trade visitors and media representatives from around the world. After a two-year forced hiatus, the entire audio industry can also hardly wait to finally converge in the MOC at the leading international audio trade show, share news and views and conduct business.

That is why this year's HIGH END will feature a very special atmosphere. People will finally be able to meet face-to-face again and enjoy live experiences even more than in previous years. Naturally, they missed the business, but the personal interaction in particular was severely lacking during the long trade show interruption. The pent-up demand for the industry is immense, which is why this year for the first time, there will be two B2B days at the HIGH END. But hi-fi fans and

equipment aficionados among consumers will also have the opportunity to further explore their passion. With a diversified portfolio, some 500 exhibiting companies will be showcasing all the audio industry has to offer. Whether it be Sound-sclever systems, which are of particular interest to entry-level consumers, or young start-up companies offering stunning new innovations, or the World of Headphones, where the diversity of headphones will be presented in a central exhibition space, allowing for side-by-side comparison, once again there will be lots to discover at the HIGH END. And with a little bit of luck, visitors might also even run into this year's brand ambassador Alan Parsons, who accepted our invitation to Munich and will be our honoured guest for two days.

# FOREWORD

Stefan Dreischärf - High End Society



 **HIGHEND**<sup>®</sup>  
munich



High End Munich is a fantastic show but you need to know where and when it's happening and where you can book your tickets...and of course, what kind of tickets you can buy.



**LOCATION:**

MOC München  
Lilienthalallee 40  
80939 Munich

tration.

**IPS 2022 (International Parts And Supply Audio Industry Trade Show):**

**DATE:**

May 19th to 22nd 2022

**May 19th and 20th 2022, 10:00am to 6:00pm. Trade visitor tickets only.**

**OPENING HOURS:**

Thursday: 10:00am to 6:00pm  
(Trade and Press only)

Friday: 10:00am to 6:00pm  
(Trade and Press only)

Saturday: 10:00am to 6:00pm

Sunday: 10:00am to 4:00pm  
Thursday and Friday only open for trade visitors with pre-regis-

**LOCATION:**

MOC Hall 1

**TICKETS**

Trade visitors: B2B Ticket, valid on both trade visitor days: 30 EUR

Visitors: Day Ticket Saturday: 20 EUR | Day Ticket Sunday: 10 EUR



**19. - 22. MAY MUNICH**  
**19. + 20.5. B2B ONLY**





## HIGH END MUNICH VISITOR INFORMATION

Please note: Because of the Covid 19 pandemic, the daily number of visitors is limited.

You can order your ticket for the HIGHEND / IPS easily and conveniently online using the ticket shop. You have the option to pay with PayPal or credit card. You will receive your tickets by e-mail. After receiving the ticket, you can decide whether you prefer a paper copy or store it on your smartphone.

### FREE PUBLIC TRANSPORT

Your trade fair admission ticket also entitles you to use the services of the Munich public transport system company MVV free of charge within the "Tarif-Zone M-6". Exhibitor and press tickets are valid in the "Tarif-Zone M" (Munich city area). You can find the validity period on the ticket.

The MVV ticket is not valid without the trade fair admission ticket!

Ticket purchase is online only with pre-registration at the High End Society ticket shop, tickets are not available on the door.

## BUY TICKETS HERE

### COVID-19 INFO (Correct at the time of publication)

As of April 3, 2022, there are no longer any mandatory access restrictions for trade shows in Germany, such as 3G or 2G regulations, distance, or face mask requirements.

The safety and hygiene concept for the HIGH END 2022 concept factors in the current federal state regulations for the holding of events and incorporates the highest applicable infection protection standards. These specifications can be adapted by the state government at any time in the event of a change in the infection situation.

The organizer tells us that they are taking the best possible precautions to protect the health of all parties involved in their audio trade shows and exhibitions. Therefore, they also reserve the right to adapt their safety and hygiene concept to the current situation in such a way that the risk of infection with Covid-19 is as low as possible.



**19. - 22. MAY MUNICH**  
**19. + 20.5. B2B ONLY**





The HifiDeluxe Show runs on the Thursday, Friday and Saturday, May the 19th to 21st.

Entry to the show is free.

**HIFIDELUXE VISITOR INFORMATION**

Berliner Straße 93  
D-80805 München-Schwabing



**hifideluxe**  
munich

The HifiDeluxe Show runs on the Thursday, Friday and Saturday, May the 19th to 21st. Entry to the show is free.

**OPENING HOURS**

Thursday and Friday from  
12.00 to 20.00

Saturday from 11:00 to 18:00  
Munich Marriott Hotel

**SHUTTLE BUS TO THE MOC**

There is a free shuttle bus service between the High End exhibition and the Hifi Deluxe every 15 minutes. You will find the bus stops right on the front of the Marriott Hotel and across the road from the MOC, hall 3. If you are using the Ubahn you get off at the Nordfriedhof stop.



**hifideluxe**  
munich



# HIGH END MUNICH APP

## GET ORGANISED WITH THE FREE iOS & ANDROID APP FOR HIGH END MUNICH



Install or update the High End Munich App for the 2022 show. It is available for Android or iOS and can be downloaded from the Apple or Google Play app stores, just search for High End Society.

The High End Munich app contains all the information that you need about exhibitors and locations at the MOC.

Use it to plan your visit to our audio show from the comfort of your sofa. The app offers a directory of brands, exhibitors or product groups with search function, digital hall plans and much more relevant trade show information. With your own list of favourites, you can also save exhibitors that are

particularly interesting to you and then call them up on site, sorted by hall or alphabetically.

**Install or update now the app for the HIGH END 2022 in Munich!**

[Android / Google](#)

[iOS / Apple](#)

[Having trouble? Hit this link.](#)



**19. - 22. MAY MUNICH**  
**19. + 20.5. B2B ONLY**





**DIE APP  
ZUR MESSE  
THE SHOW APP**

Available on the  
App Store

ANDROID APP ON  
Google play

**THE  
MAGIC  
OF MUSIC**

**19. - 22. MAY MUNICH**  
**19. + 20.5. B2B ONLY**

**HIGH END<sup>®</sup>**  
munich2022





# FOOD & DRINK

## FOOD & DRINK IN MUNICH

### EATING OUT IN MUNICH

After all day at the HiFi Show you are bound to be hungry, after all that walking and listening to great audio, you will need sustenance.

There are various places to eat in the MOC itself with dishes ranging from sandwiches and light snacks through to proper sit-down menus. There's also lots of places you can get liquid refreshment including the splendid beer garden situated between Hall 3 and Hall 4. However, once the show is over you will want to head into town and eat and so here is the HiFi Pig guide to eating out in Munich. Of course, these are just suggestions and there are so many wonderful eating and drinking establishments in Munich so you can more or less guarantee to find somewhere even if you are wandering around taking in the sites of the city.

Get away from your hotel in the evening and go explore this wonderful and friendly city and all it has to offer, from the

traditional to the more quirky and modern.

### VEGAN AND VEGETARIAN

Despite the Bavarian love of all foods that are pig based it is still pretty easy to eat out if you are vegan or vegetarian. Here's a handful of restaurants that are either vegan/vegetarian or cater for your needs. Max Pett is a vegan institution and has been open for many years. HiFi Pig thoroughly recommends it and we'll be hopefully getting our vegan schnitzel fix there at some point. It's completely vegan, alcohol free and utterly delicious.

You don't need to be fluent in German to understand what the Katzentempel is – yep, it's a café with cats, though not to eat of course, the menu is veggie and vegan!

The Gratitude  
Max Pett  
Dr Drooly Pizza  
Cafe Katzentempel  
Erbils  
Siggis  
Bodhi

# FOOD & DRINK

Tushita Teehaus  
Hippie Chay

## OTHER RESTAURANTS

For the meat enthusiasts attending the show the choice is vast in Munich but here are what Trip Advisor suggests as being good places to eat. Many of the places listed below are vegetarian friendly but our advice is to check before booking.

Restaurant Pils Corner  
Steinheil 16  
Zum Durnbraeu  
Wirtshaus Zum Straubinger  
Restaurant Halali  
Zwickl - Gastlichkeit am Viktualienmarkt  
Zum Alten Markt  
Truderinger Wirtshaus  
Servus Heidi  
Ratskeller Munchen  
Augustiner-Keller

## BEER IN MUNICH

Beer is a big tradition in Munich and it isn't unusual, particularly on the Saturday when there is a football match on, to see gangs of people dressed in their traditional lederhosen and pulling carts full of bottles of beer. Sounds like a recipe for disaster, but in all the years we've been going to Munich for the High End Show we've never encountered any hassles with drunk people.

For those new to Munich the Hofbräuhaus is a bit of a must. It's a vast and sprawling brewery and beer hall (or halls) that has Oompah bands playing, huge steins of beer and traditionally dressed women going around selling salty pretzels. They also sell rib sticking food with a limited choice for vegetarians.

Beer in Germany comes in many styles and here's the ones we've encountered most whilst we've visited.

## STYLES OF BEER IN BAVARIA

Weizenbier and Weißbier are the standard German names for wheat beer with Weiß meaning white.

Hefeweizen is an unfiltered wheat beer with

"Hefe" being German for yeast.

Helles is a malty pale lager from Bavaria and is available pretty much everywhere.

Pilsener is massively popular in Germany and is a pale and hoppy lager.

Dunkel is a dark lager which comes in Bavaria is a sweet and malty.

The Germans are very forward thinking and most of the breweries produce at least one non alcoholic version of their beer.

## SOME OF THE BEER HOUSES IN MUNICH

Hofbräuhaus München  
Tap-House  
Schneider Bräuhaus München  
Paulaner Bräuhaus  
Löwenbräukeller  
Augustiner Bräustuben  
Zum Flaucher Biergarten  
Der Pschorr  
Zum Augustiner

WIN AN AVIDHIFI  
INGENIUM  
TURNTABLE  
IN OUR FREE TO  
ENTER  
COMPETITION



**AVIDHIFI**

SEE DETAILS AT THE BACK OF THIS MAGAZINE

## GETTING AROUND IN MUNICH

The train/underground system of the S and U Bahn in Munich is very safe, clean and easy to navigate. To get to the MOC by underground from the centre of Munich, you want to take the U6 line from Marienplatz, it's easy to remember because you are heading in the same direction as the Bayern-Munich football stadium. Get off at Kieferngarten and then it's a short walk to the MOC...follow the crowds. The trains get really busy around opening and closing times of the show and if there is a football match on it gets really crazy.

The MOC is in the inner district for the S and U bahn trains. All tickets for the HIGH END 2022 and the IPS 2022 trade shows that are ordered in advance can also be used as MVV-Kombi-Tickets, combined tickets for using public transport around Munich. With these tickets, you can travel to the MOC Event Centre conveniently and for free, for example by bus, tram or train.

**Day tickets for visitors and trade visitors:**

The day ticket entitles you to a return journey to and from the MOC Event Centre in Munich with the public transport run by MVV (S-Bahn/U-Bahn trains, trams and buses) on your chosen day.

The area of validity includes zones M - 6 of the MVV.

### **Exhibitor tickets and media representatives:**

The MVV ticket included in the exhibitor pass can be used on all four days of the trade show (19th to 22nd May 2022) for any number of journeys on public transport throughout the city of Munich (Zone M).

The free MVV ticket is not valid without the trade fair admission ticket.

If you need to buy MVV tickets for other trips during your stay in Munich, this can be done online or at the station ticket machines. <https://ticketshop.mvv-muenchen.de/index.php/tickets>

Taxis are plentiful too, as you



# GETTING AROUND

would expect in a major city, and we also use Uber in Munich. If the weather is good, then walking is always an option for those of a fitter persuasion.

## HIGH END AND HIFIDELUXE SHUTTLE BUS

If you are traveling between the MOC and the HiFiDeluxe there are free shuttle busses running between the two shows, the bus stops right at the front of the Marriott Hotel and across from the MOC, Hall 3. These run every 15 minutes during the HiFiDeluxe show opening times.

## AIRPORT SHUTTLE

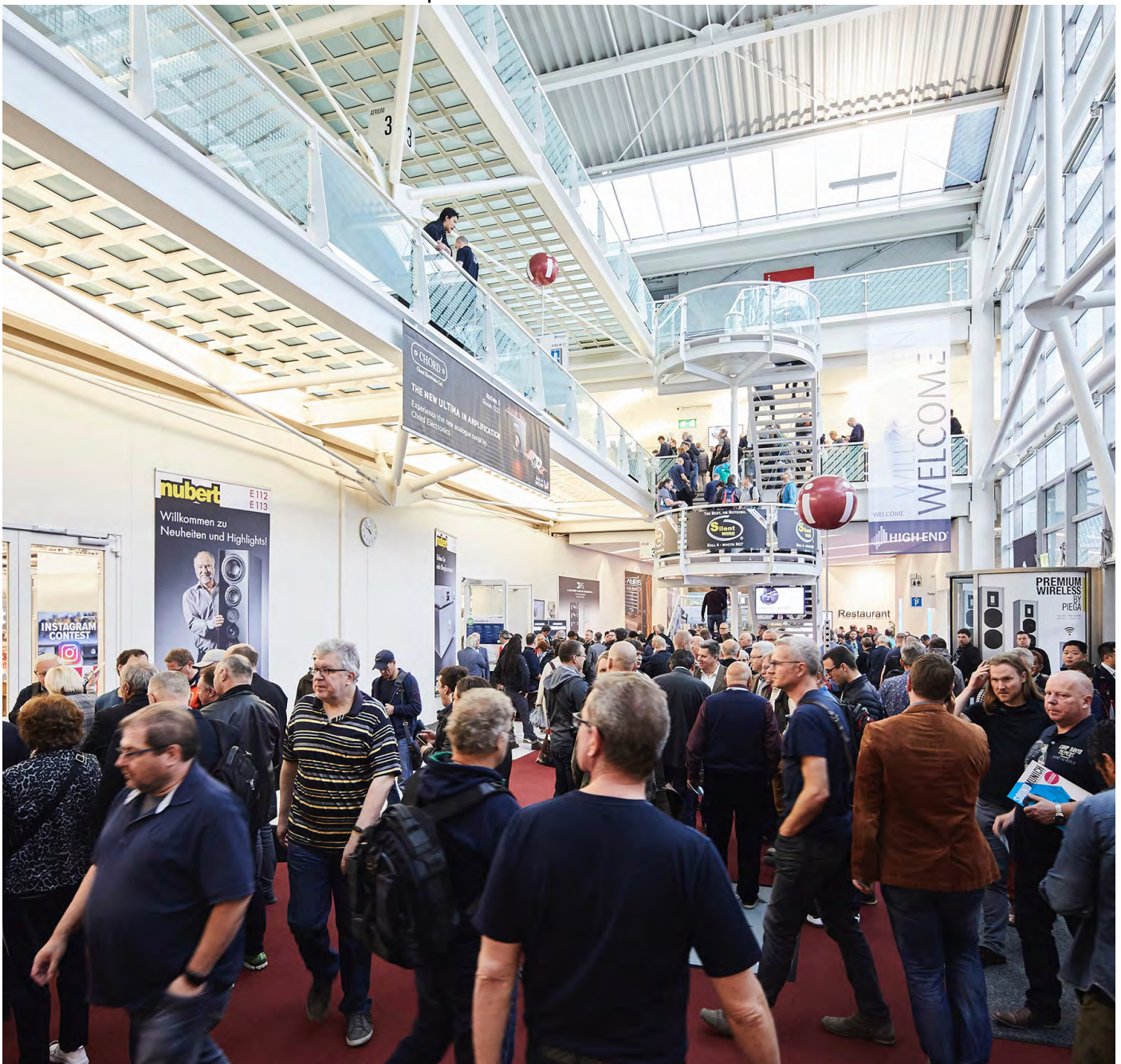
During the HIGH END and the IPS exhibition, shuttle buses run between Munich Airport and

the event at the MOC Event Centre every 30 minutes.

At the airport, the buses stop at the allocated bus stops at Terminals 1 and 2. Follow the general signs directing you to the bus stops at the airport.

The shuttle buses do not operate on the installation and dismantling days.

The shuttle bus service is free of charge for holders of a press ticket, exhibitor ticket or trade visitor ticket. Passengers may be requested to show their tickets.







## EPOS & FINKTEAM

### EPOS LOUDSPEAKERS COME BACK FROM THE FUTURE

epos

**F**inkTeam owner, Karl-Heinz Fink, purchased the Epos brand name from Mike Creek in 2020 as he wanted to apply modern thinking to a brand steeped in its past founder, Robin Marshall's, design philosophy. Not that there was anything wrong with Robin's thinking, it differed in its day from the thinking of other UK speaker engineers. How could Epos thinking be brought up to date?

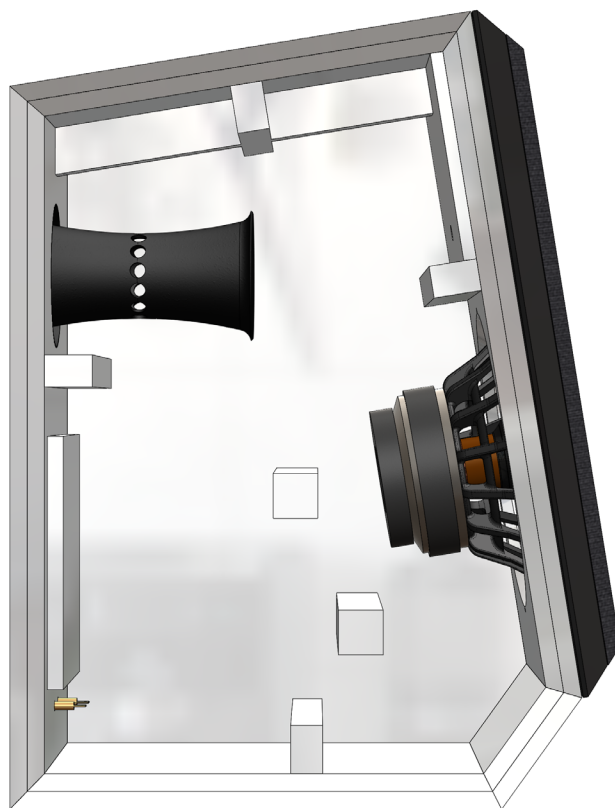
Well two years later Epos will launch, at the Munich High End Show in May 2020, the first model from Karl-Heinz, the new Epos ES14N. This is a 2-way speaker in a fairly big and classic looking cabinet, to be used on a dedicated stand.

#### THE CABINET

The cabinet itself uses more or less the same volume as the original Epos ES-14N. However, the shape of the cabinet is different. The front baffle is tilted to the back in order to time-align the woofer and the tweeter. As the design is a reflex system, a port is of course needed. It's located on the back of the cabinet and the position is on around a fourth of the cabinet height (from the top). The cabinet uses a double layer MDF construction, glued together with the latest generation of damping glue. This latest generation is more consistent compared to older solutions and allows easier production. Additional bracing

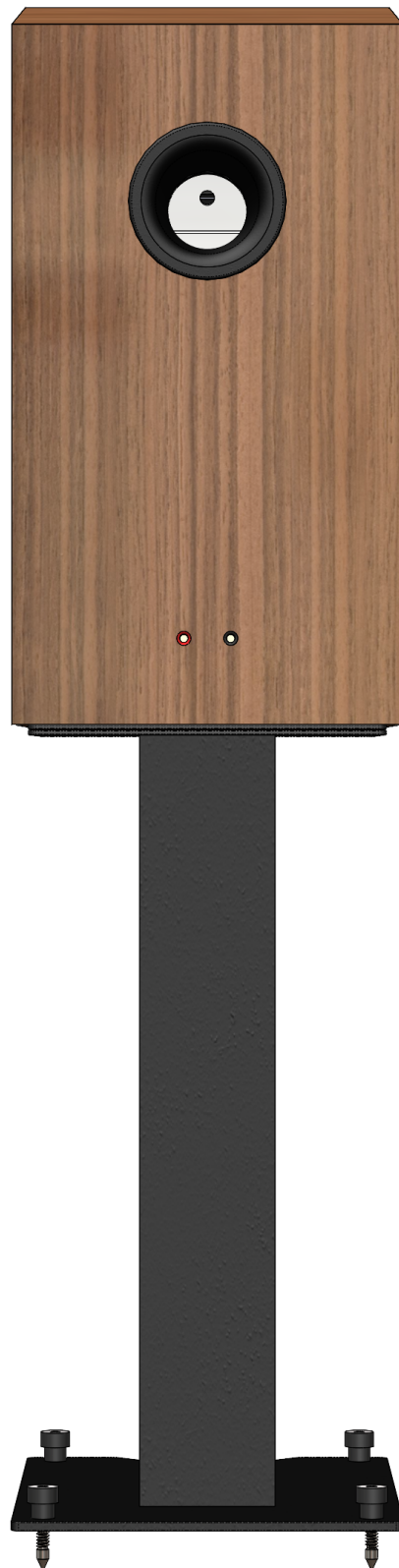


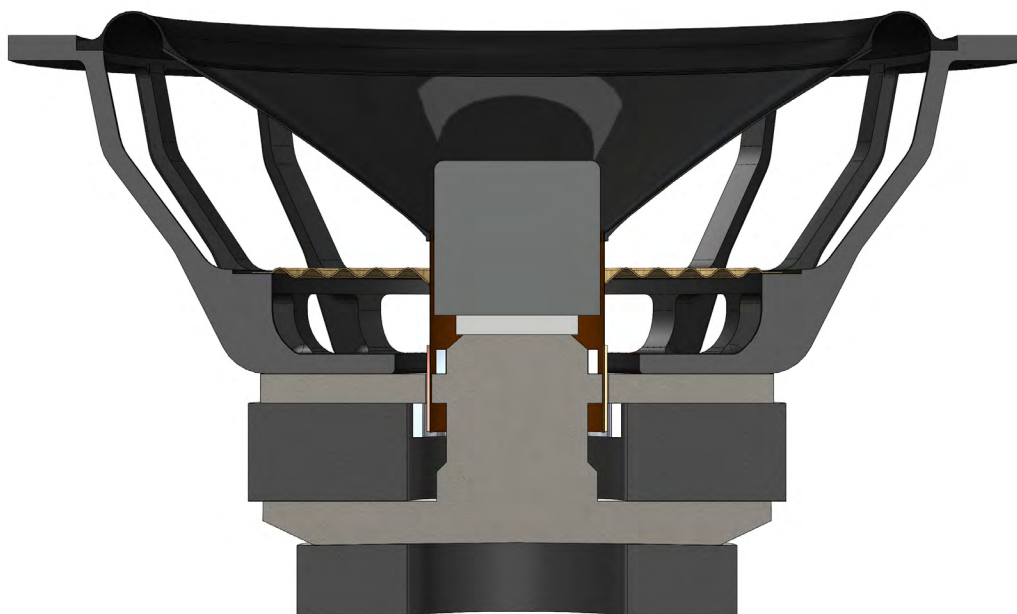












has been used to control the panel vibration modes and reduce the unwanted radiation of the whole cabinet. Only a little damping material is needed internally.

### EPOS ES14N DRIVERS

The Bass Unit, designed in house, is a High Power 7", 35mm mm voice coil diameter, Hybrid Ferrite and Neodymium magnet, injection moulded cone with variable thickness and Mica filling. Low hysteresis rubber surround. HF Unit 28mm tweeter, also designed in house, with Aluminium/Ceramic compound dome and no Ferrofluid.

### THE RESULT

Come and hear them in our booth at the Munich High End Show, A4.1 E122. A fast, detailed amazing speaker worthy of the Epos name and tradition. The ES14N will be demonstrated using electronics from Soulnote, a high-end home audio brand by CSR, Inc. headquartered in Kanagawa, Japan. CSR was founded in 2004 by the former members of Nippon Marantz.

### FINKTEAM

Soulnote will be demonstrating FinkTeam Borg in their booth located at H 4, S06/T07.

Don't miss them!





# SOLIDSTEEL

## SOLIDSTEEL AT HIGH END MUNICH 2022



**S**olidsteel will be attending the Munich High End show with a larger exhibition space compared to those of the previous editions – e.g., 2019 – in which a selection of the company's best lines will be shown including some relevant news, in terms of products and innovation, that the company has introduced in the last two years.

Most importantly, the company will have the pleasure of meeting again all the audio enthusiasts and the business and technical partners who will participate in the show. Furthermore, all those who visit our stand will receive an exclusive gift as well as unmissable opportunities regarding Solid-

steel products.

### SOLIDSTEEL BRAND AM-BASSADOR

In our booth, Marco Fullone, Solidsteel Brand Ambassador, DJ and Music Designer for Radio Monte Carlo, is to be present whose playlist, specifically created for the event, will be featured. He also will be discussing records and giving valuable musical advice to all high-fidelity enthusiasts in attendance.

### 100% MADE IN ITALY

By further strengthening its 100% Made in Italy identity, the company will exhibit its most successful lines:



SOLIDSTEEL



**solidsteel**

**VISIT US  
IN MUNICH**

**19-20-21-22  
MAY 2022  
HALL 3, K 12**

**HIGHEND**  
munich2022





**solidsteel**

**VISIT US  
IN MUNICH**

**19-20-21-22  
MAY 2022  
HALL 3, K 12**

**HIGHEND**  
munich2022

ESSENTIAL HIGH END MUNICH 2022

SOLIDSTEEL



**solidsteel**

**VISIT US  
IN MUNICH**

**19-20-21-22  
MAY 2022  
HALL 3, K 12**

**HIGHEND**  
munich2022

**HiFi Pic  
MAGAZINE**



**solidsteel**

**VISIT US  
IN MUNICH**

**19-20-21-22  
MAY 2022  
HALL 3, K 12**

**HIGHEND**  
munich2022

## SOLIDSTEEL



– The S and VL Series, including the recent S5 30th Anniversary Edition (awarded by Fidelity Magazin) and the new full black colourway for the popular VL Series

– The prestigious Hyperspike Series, with the best finishes and materials of production, from the HY series to the HF series, passing through the new models of the HFW series.

– The renowned stands of the SS series will be exhibited, award-winning and universally recognized as the best bookshelf speaker stands on the market, thanks to their design and construction process, which boasts 30 years of experience.

– The Vibestand, which opens a new line in the company's history dedicated to the world of pro audio, towards which Solidsteel is heading to.

– Modern and eco-sustainable 3D printing technology – the company strongly believes in this new concept as an integral current and future part of the production of intelligent and functional accessories for the needs of the hi-fi market. Relevant previews will also be shown along with the opportunity to touch and perceive the quality

of Solidsteel products, their technical characteristics and construction materials.

### GAETANO CONTI

Gaetano Conti, Solidsteel Owner and Managing Director: "After two years of absence from the show, we are very happy to return to Munich and meet again professionals and enthusiasts of the sector. This year we have decided to set up a large exhibition space that represents the work we have been carrying out over these two challenging years that have brought us nothing but enormous satisfaction, making the Brand grow, consolidating and expanding our international presence as one of the most appreciated producers of Hi-Fi accessories all over the world. We invite everyone, enthusiasts and professionals, to pay us a visit to our stand to exchange opinions and show first-hand the quality of our racks and stands, 100% Made in Italy".

### HIGH END MUNICH 2022

Solidsteel will be in the MOC, Hall 3, stand K12

**solidsteel**

**VISIT US  
IN MUNICH**

**19-20-21-22  
MAY 2022  
HALL 3, K 12**

**HIGHEND**  
munich2022





# PMC

## PMC AT HIGH END MUNICH 2022

**PMC**

**R**oom D107, Atrium 3 at this year's High End Show will see UK-based PMC, the world leader in home audio and studio reference loudspeakers, sharing space with AVM (its distributor in Germany) to demonstrate the company's flagship speaker system, fact fenestria and showcase the twenty5i and ci series.

### PMC FACT FENESTRIA

fenestria is the pinnacle of PMC loudspeaker design, incorporating the proprietary technologies that have been developed and fine-tuned over the past 30 years.

A three-way, ultra-high-res-

olution passive twin ATL™ (Advanced Transmission Line) loudspeaker, fenestria incorporates, custom-made drivers, twin Laminair™ vents for improved aerodynamic ATL airflow, plus an innovative and elegant reflection-free module that both houses and isolates the treble and mid-range units. The result is aesthetically beautiful and highly engineered, conveying the emotion of a musical performance with more subtlety and refinement than any other loudspeaker.

The fact fenestria is the speaker you'll never hear. This isn't meant flippantly, but literally. The five years' research and development that went into its creation focused on the elimi-



PMC





**PMC**®

**factfenestria**



VISIT US  
**D107**  
ATRIUM 3

## PMC

nation of all unwanted vibrations from the drive units, cabinets and other critical components that are inherent in all loudspeakers. These reduce the clarity, precision and neutrality of the speakers, and introduce colouration that detracts from the musical experience. By engineering them out of the fenestria all you hear is nothing but the music.

Ever since the company's first product, the BB5 XBD Active, was installed at BBC's Maida Vale Studio in 1991, the quest has been to create loudspeakers that are the reference for sonic neutrality. fenestria is the pinnacle of this process and represents the culmination of our 30 years of speaker design.

As Peter Thomas, our founder and owner puts it, "fenestria is the perfect example of our holistic design approach. Our aim was to make the best passive loudspeaker we could, with a completely open mind when it came to the technologies and materials to use. We looked at all options to achieve the purest, most transparent sound, and fenestria was the result."

Oliver Thomas, chief designer on the fenestria project, is very proud of the team's achievement, "The fenestria was a fantastic design project. The research and development put into key technologies which were realised through this design was fascinating for the PMC engineering team and myself, from the new PMC75 midrange version which takes colouration down to the next level, to the use of vibration control and isolation throughout. We took this route of ground up redevelopment and refinement of each element of loudspeaker design with the goal of finding more detail in every audio recording."

Since those early days, PMC has espoused the philosophy that there is only one way to design a loudspeaker, and that is the right way, whether it is for a professional studio speaker or a domestic hi-fi speaker. That is why all PMC speakers are voiced the same and have the

same dispersion pattern and can be mixed and matched.

Nothing is more representative of PMC's well known "from studio to home" approach to loudspeaker design than the use of the flagship fenestrias in one of the world's leading professional mastering studios. Four-times Grammy Award winning mastering engineer, Darcy Proper, installed fenestrias in her New York studio, using them to mix an immersive audio album which brought her 12th Grammy nomination.

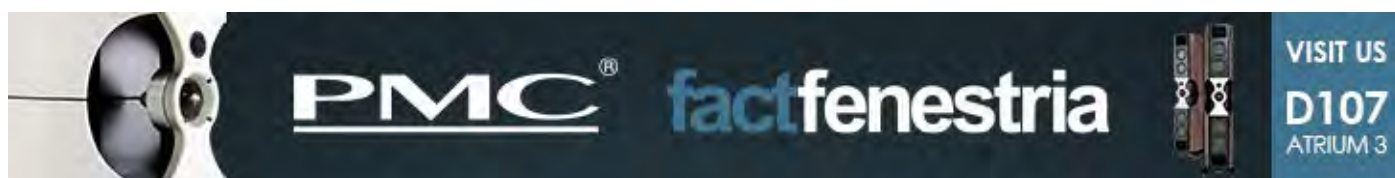
The fenestria is the perfect speaker for the job of mastering, as Darcy puts it "The fenestrias are a critical part of the accurate and detailed, yet musical, monitoring system which is the basis for the sonic evaluation and decision-making fundamental to my work as a mastering engineer. Without that reliable point of reference, any adjustments I make would simply be guesswork."

## PMC TWENTY5i

In addition to fenestria, the outstanding and critically acclaimed twenty5i series will be on display. The twenty5i series employs technologies originally developed for both the company's professional monitors and fenestria, in the most popular PMC hi-fi range. From the flagships, the QB1 studio speakers, and fenestria, comes the Laminair port – the most significant development in the famous Advanced Transmission Line technology in 20 years. And also from fenestria, the new techniques of vibration analysis has resulted in specially developed isolation mounts for the floor-standing models to reduce unwanted resonance and colouration within the cabinet.

## PMC CI SERIES


For both audiophiles and home cinema enthusiasts, the new ci series will be available to view. These slimline on-wall and in-wall models have quickly become the reference for Dolby Atmos





PMC





VISIT US  
D107  
ATRIUM 3







mixing suites around the world. To recreate the awe-inspiring realism and stunning dynamics of a blockbuster in the home, there is no better choice of loudspeaker than those used to make the movies themselves.

Don't miss the fenestria demonstrations and the chance to explore the other ranges, and experience why PMC speakers are the ones that

“make music and movies”.

For the full range from PMC, see [www.pmc-speakers.com](http://www.pmc-speakers.com)

Room D107, Atrium 3







# TELLURIUM Q

ALTHOUGH NOT ATENDING THE SHOW,  
TELLURIUM Q HAVE BEEN VERY BUSY



**T**ellurium Q will not be at Munich this year but we look forward to meeting you at Munich in 2023 when we will be attending.

So, we would just like to take this opportunity to thank all our fantastic customers and hard-working, helpful dealers and distributors who are enabling us to continue to improve and grow strongly even through these difficult times.

Tellurium Q has some great surprises in the pipeline to release more of your system's performance which is sure to impress just like the new Black II power cable has and its newly released big brother the Ultra Black II power cable is

starting to.

## 13 YEARS OF TELLURIUM Q

We cannot believe that it has only been just over 13 years since our very first product, the Black speaker cable, started to go into customer's systems. Since then, we have very much refined and audibly surpassed our earlier designs having been on a steep learning curve with our research and development (R&D). From that single product years later the unique Tellurium Q® 3 X 3 Matrix has been developed which gives customers a clear and unique guide to which of our cables will suit your system and listening preference. Something no other company can offer that



# TELLURIUM Q



**Tellurium Q®**

[telluriumq.com](http://telluriumq.com)



Queens Award for Enterprise  
Winner 2018 & 2021





TELLURIUM Q



Tellurium Q®

[telluriumq.com](http://telluriumq.com)



Queens Award for Enterprise  
Winner 2018 & 2021

## TELLURIUM Q



**Tellurium Q®**

[telluriumq.com](http://telluriumq.com)



Queens Award for Enterprise  
Winner 2018 & 2021

TELLURIUM Q



Tellurium Q® Statement

Tellurium Q®

[telluriumq.com](http://telluriumq.com)



Queens Award for Enterprise  
Winner 2018 & 2021



## TELLURIUM Q



we are aware of.

As you can see you simply decide what general quality of sound you would like then match the level of performance to your system to allow you to pick the level of performance and the sonic quality of your cables with a greater degree of confidence and accuracy than ever before. It is an unusual approach, but audiophiles globally are beginning to really appreciate how well it works and is also a contributing factor in Tellurium Q having won so many product of the year awards in such a short time.

If you are interested in knowing more there

are extensive searchable links to many of the reviews of our products (averaging around 1 per month for the whole time we have been in existence) and lists of dealers and distributors worldwide available on our website. If you do not find your region is served by a distributor, then please feel free to contact us directly or recommend a local distributor do so.

[WEBSITE](#)

[FACEBOOK](#)

**Tellurium Q®**

telluriumq.com



Queens Award for Enterprise  
Winner 2018 & 2021





# TOTALDAC

## TOTALDAC IN MUNICH 2022 AT THE MOC AND HIFI DELUXE

totaldac

**T**otaldac will be at Hifi-Deluxe in Munich, May 19th-21st 2022. They also will now be in the MOC at the High End Munich show in a large room in Atrium 4.1. from the 19th to the 22nd of May.

- Echolle interconnects and power cord
- live-power power supply
- d1-driver monoblocs
- Amp-1 amplifier, stereo version
- new d100%wood speakers

A free shuttlebus runs between the two shows.

### NEW PRODUCT HIGHLIGHTS

#### FULL TOTALDAC SYSTEM

#### D100

Full Totaldac system composed of:

- new d1-switch, the Totaldac ethernet switch
- d1-player
- d1-streamer-mk2
- Totaldac ethernet cable/filters
- reclocker d1-digital-mk2
- d1-twelve-mk3 DAC with UP12 AES-EBU cables

The Totaldac d100 speakers have been designed to offer the most natural music reproduction while being compatible with your living room and without being too expensive.

Their high sensitivity allows them to produce a very controlled sound at all frequencies

totaldac  
FROM SOURCES TO SPEAKERS





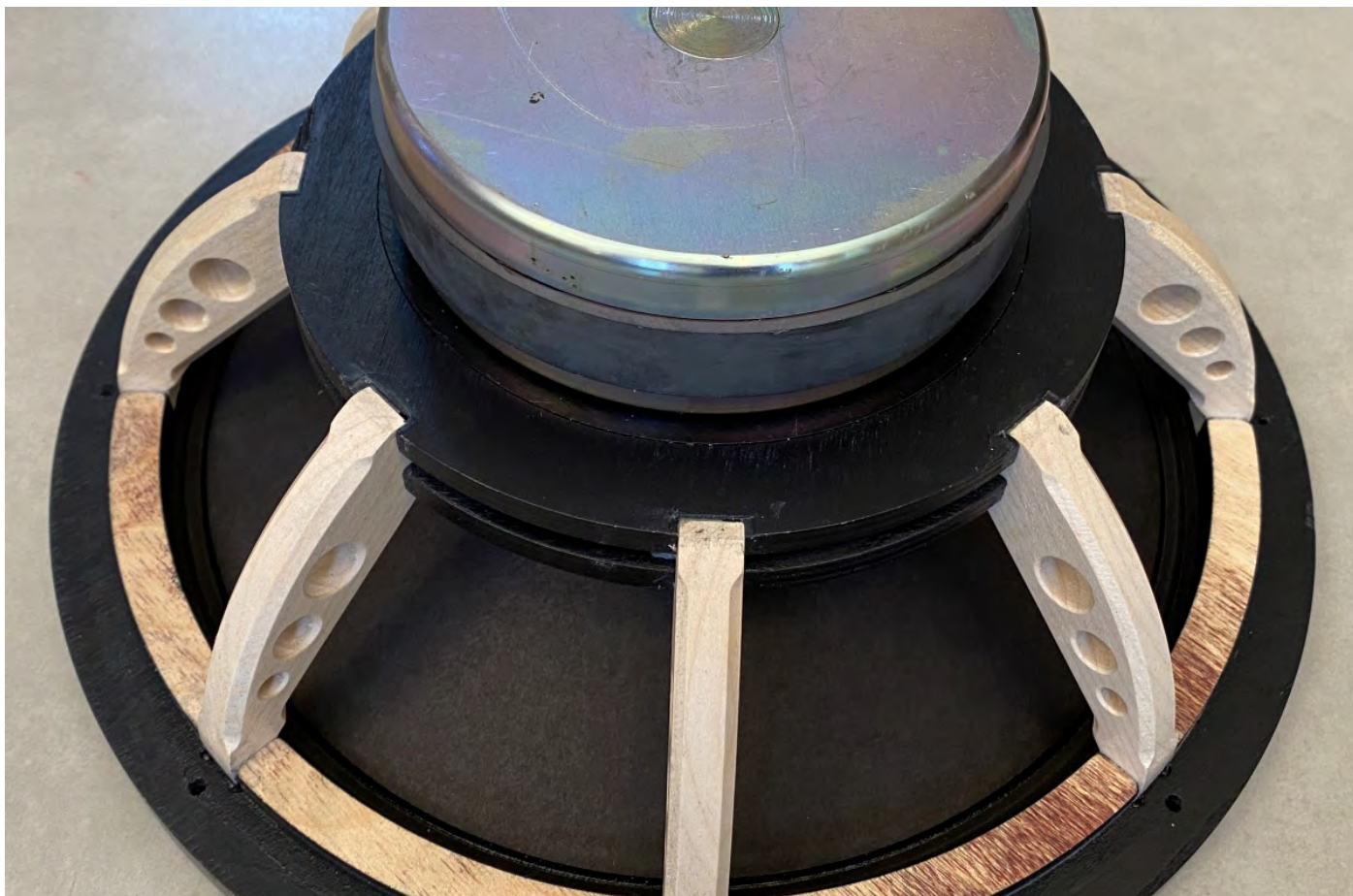
totaldac

FROM SOURCES TO SPEAKERS





## TOTALDAC



and with realistic and rich bass, making them suitable for all types of music genres, from classical music to electro.

With the d100 speakers are so fast that you get the “feeling of being there” with most music tracks, not just with some selected tracks. During the design phase, some music recorded by Totaldac in the large Totaldac auditorium has also been used. This gave an absolute feeling of how these instruments should sound. The recording equipment is also used to record the speaker themselves, look at the Totaldac YouTube page. The d100 have also been tested with success in small rooms. You can give them a chance against any other speaker at any price.

### **Specifications:**

-98dB @ 1m @ 2.83V even in bass thanks to two 12inch drivers  
 -2.5way: both 12inch drivers are producing bass but only the top driver is producing midrange as well

-bass cut-off: 25Hz at -6dB in room  
 -8ohm average impedance with smooth variations  
 -easy matching with any amplifier, including low power triodes  
 -constant directivity horn used only above 3.5KHz  
 -equally resolving from top to bottom  
 -most of the sound is coming from the top of the speaker, giving it a bookshelf speaker coherency  
 -driver and crossover components from Western Europe manufacturers  
 -Neodymium bass driver with very high force  
 -custom made ultra fast bass/mid driver  
 -very extended treble 1 inch compression driver with organic dome  
 -crossover made of air coils and selected film capacitors only  
 -point to point wiring crossover, no PCB trace is used, only the component legs are used  
 -inductor for the bass made of 5mm<sup>2</sup> copper wire

**totaldac**  
 FROM SOURCES TO SPEAKERS



TOTALDAC



totaldac

FROM SOURCES TO SPEAKERS





TOTALDAC



totaldac

FROM SOURCES TO SPEAKERS



## TOTALDAC

- crossover isolated in its own wooden enclosure
- Mundorf binding posts for any kind of banana and spade cables
- cabinet made of Baltic Birch Plywood (grey, another color on request), or 100% solid wood (see the d100%wood version)
- made in France
- width: 320mm
- depth: 470mm
- height: 1180mm
- weight: 42kg

### D100%WOOD

The d100 is also available in pure solid wood, made of French chestnut with oil as finish for the cabinet, a horn made of solid wood as well, and even more exceptional the driver frame is also made of wood for an even better sound.

The d1-switch is made to improve the sound of a digital source connected to the network, making the sound more natural for local files playing and for internet streaming.

The d1-switch uses 4 internally chained ethernet switches, an OCXO oscillator, a mains filter and embeds natively a Totaldac live-power power supply, already proven for Totaldac DACs, streamers, drivers and amplifiers. You can insert this switch in the system just to improve the source quality (acting like an ethernet reclocker/filter), even if you don't need to multiply the ethernet sockets. The Totaldac d1-switch is embedded in the same enclosure as the Totaldac DACs or streamers, for a perfect matching in a Totaldac system.

Three RJ45 sockets have each their functionality:

- a router input, connected to the router or to a local network wall socket
- a NAS input, connected to a NAS or a server or a room core, a Totaldac d1-player for example
- a streamer input, connected to a Totaldac d1-streamer-mk2 for example

### Specifications:

- 4 internally chained ethernet switches to lower the jitter 4 times
- well known Totaldac live-power linear power supply, with a dedicated winding for the oscillator
- mechanical isolator
- gigabit ethernet for fast copies of files to the NAS/server/core and 100Mbit ethernet for the streamer output for the best sound
- OCXO oscillator with professional clock distribution
- 4 layer PCB, made in Germany
- EMC filtering and damping
- power consumption: 16W.
- dimensions: height 110mm, width 360mm, depth 290mm.
- weight: 3.5kg.

### D1-TWELVE-MK3 DAC

The d1-twelve-mk3 is the latest version of the famous d1-twelve DAC.

This DAC is composed of two monoblocs and a specialized reclocker, so it is a 3 box system. The d1-twelve-mk3 uses 6 discrete resistor R2R ladders per channel, so a total of 12 ladders for the system and in other words roughly 600 Vishay Foil resistors, probably unique in the world. So many DACs in parallel allow lowering of the noise and the impedance, so much that an output stage is not mandatory.

The d1-twelve-mk3 has two different sets of outputs that the user can select by a switch:
 

- one set of unbalanced RCA and XLR outputs which are directly connected to the R2R ladders, without use of an active output stage. So there is no tube nor transistor nor any other active components in these outputs for the maximum transparency. Also no feedback at all.
- one set of RCA and balanced XLR outputs using a discrete transistor class A output stage. These outputs have a higher voltage to match all (pre)amplifiers.





TOTALDAC



totaldac

FROM SOURCES TO SPEAKERS



## TOTALDAC

The d1-twelve-mk3 has been designed for the most resolving speakers, so the most difficult to satisfy, to get the largest amount of information and at the same time a sweetness never heard before.

The d1-twelve(-mk3) was playing at the Munich show many times

### Specifications:

- 192KHz asynchronous Xmos USB, optical, RCA and AES-EBU digital inputs, selected from a remote control.
- 44.1KHz, 48KHz, 88.2KHz, 96KHz, 176.4KHz and 192KHz, 16 to 24 bit formats supported.
- as an option, DSD (DoP standard) supported on all inputs.
- embedded custom clock with anti-jitter FIFO memory.
- 1.6Vrms max at the R2R direct unbalanced RCA and XLR outputs.
- 3.2Vrms max at the RCA output with active output stage, 6.4Vrms max at the balanced XLR output with active output stage.
- volume control, adjusted by a remote control and an OLED display, works for all inputs, not only USB.
- phase polarity selected by remote control.
- non-oversampling DAC compensation filter activated or deactivated by remote control.
- display switched off by remote control or automatic.
- R2R DAC technology using about 600 pieces of 0.01% VAR Bulk Metal® Foil resistors Vishay Foil Resistors.
- direct R2R ladder outputs or class A discrete transistor output stage, selected by a switch at the back panel of the DAC.
- two AES-EBU cables (included) connect the digital front end to the monoblocs.
- external power supply to minimize the noise.
- aluminium and PMMA enclosure with massive pure copper antivibration plate.
- power consumption 45W total.
- DAC dimensions: height 110mm, width 360mm, depth 290mm.
- power supply dimensions: height 65mm, width

122mm, depth 180mm.

## HIFI DELUXE SHOW

HifiDeluxe Munich, May 19th-21st 2022.

Location: Marriott hotel, "Living room", first floor close to the large stairs.

Free entrance.

Everybody will be welcome even Thursday and Friday (which are professional-only at the High End show at the MOC).

Saturday is for everybody both for the Hifideluxe and High End show.

Hifideluxe opening hours:

Thursday and Friday from 12.00 to 20.00

Saturday from 11:00 to 18:00

An appointment is sometimes possible before or after these official opening hours at the HiFi Deluxe, just ask Totaldac.

Free shuttle bus between the two shows.

## HIGH END MUNICH AT THE MOC

Totaldac will be at the High End show, Atrium 4.1, room F123 (a 74sqm room). Vincent will welcome you there.

The full Totaldac system will be composed of:

- new d1-switch, the Totaldac ethernet switch
- d1-player
- d1-streamer-mk2
- Totaldac ethernet cable/filters
- reclocker d1-digital-mk2
- new d1-twelve-mk3 DAC with UP12 AES-EBU cables
- live-power power supply
- d1-driver monoblocs
- Amp-1 amplifier, stereo version
- new d100%wood speakers





DIPTYQUE



# DIPTYQUE

## NEW DIPTYQUE REFERENCE AT MUNICH 2022



**W**e made our dreams come true.

### NEW DIPTYQUE REFERENCE

In March 2020, during the first COVID 19 containment, everything stopped but our imagination! In this suspended time, we dreamed of an ultimate loudspeaker, without compromise, capable of reproducing the entire spectrum from infra-bass to ultrasound with all the naturalness, speed and transparency that only isodynamic technology is capable of reproducing with perfect consistency. As a sign of providence, at the same time, we received a phone call from Philippe Teissier du

Cros, a fabulous sound engineer who has been practicing his art for many years with our favourite musicians. We asked him to accompany us in this ambitious project, to which he responded with enthusiasm! The specifications for the diptyque reference were born out of our questions and passionate exchanges. We questioned all the existing technical solutions, and in particular to obtain powerful and controlled low frequencies down to the infra-bass. Our research and innovation work led us to develop a totally new technology that we have patented: the "Crossed Push pull".

Each bass cell is driven by two independent coils (set of



DIPTYQUE



●●diptyque  
Innovative planar speakers made in France  
Crossed Push-Pull Technology®

DIPTYQUE



●●diptyque  
Innovative planar speakers made in France  
Crossed Push-Pull Technology®



## DIPTYQUE

ribbons), one vertical and one horizontal. This exclusive technology allows the 12 µm mylar membrane to be set in vibration by hundreds of small square motors. The "crossed push-pull" technology allows to control the vibrations of the membrane without deformation. This guarantees very linear low frequencies, without distortion and with much greater efficiency than existing isodynamic systems.

For the midrange section, we developed a new 20mm isodynamic ribbon that covers a wide spectrum from 600 to 7000 Hz and for the high frequency section, a super tweeter in pure aluminium of 8mm that goes beyond 24000 Hz. From the very first listening, Philippe Teissier du Cros and our music lover friends were subjugated by the realism of the sound reproduced by the diptyque reference. We have made our dream come true. We invite you to come and discover them and share sublime sound emotions at the next trade shows: the High End in Munich and Haute Fidélité in Paris.

## SPECIFICATIONS

Type 3,5 ways : Tweeter / Mid/ Mid Bass / Bass  
Sensibility 89db/1W/1m  
Impedance 4 Ohms  
Bandwidth 22 - 24000 Hz  
Power handling 300W amplificateur recommandé>60W  
Dimensions (h,w,d) 1800x650x44 mm  
Weight 75Kg

## HIGH END MUNICH 2022

High End Munich 2022 - Hall 2 Stand G07 - with Kora and O2A  
[www.diptyqueaudio.com](http://www.diptyqueaudio.com)

## NOUVEAU DIPTYQUE REFERENCE

Nous avons concrétisé nos rêves

En Mars 2020, lors du premier confinement lié

au COVID 19 tout s'est arrêté sauf notre imagination ! Dans ce temps suspendu, nous avons rêvé d'une enceinte ultime, sans compromis, capable de reproduire tout le spectre de l'infra grave aux ultrasons avec tout le naturel, la rapidité et la transparence que seul la technologie isodynamique est capable de reproduire avec une parfaite cohérence. Comme un signe de la providence, au même moment, nous avons reçu un appel téléphonique de Philippe Teissier du Cros, fabuleux ingénieur du son qui exerce son art, depuis de nombreuses années, avec nos musiciens préférés. Nous lui avons proposé de nous accompagner dans ce projet ambitieux auquel il a répondu avec enthousiasme ! De nos questionnements croisés, nos échanges passionnés est né le cahier des charges des diptyque référence. Nous avons remis en question toutes les solutions techniques existantes, et particulièrement pour obtenir des basses fréquences puissantes et contrôlées jusque dans l'infra grave. Nos travaux de recherches et d'innovations nous ont conduit à développer une technologie totalement nouvelle que nous avons breveté : le « Crossed Push pull ».

Chaque cellule de grave est motorisé par deux bobinages (ensemble de rubans) indépendants, un vertical et un horizontal. Cette technologie exclusive permet de mettre en vibration la membrane en mylar de 12 µm par des centaines de petits moteurs de forme carré. Le « crossed push pull » permet de contrôler les vibrations de la membrane sans déformation. Ainsi, elle garanti des basses fréquences très linéaires, sans distorsion et avec beaucoup plus d'efficacité que les systèmes isodynamiques existants.

Pour la section medium, nous avons développé un nouveau ruban isodynamique de 20 mm qui couvre un large spectre de 600 à 7000 Hz et pour l'aiguë un super tweeter en aluminium pur de 8mm qui file au-delà de 24000 Hz.

Dés les premières écoutes, Philippe Teissier du





DIPTYQUE



●●diptyque  
Innovative planar speakers made in France  
Crossed Push-Pull Technology®



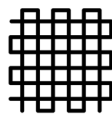
DIPTYQUE



●●diptyque  
Innovative planar speakers made in France  
Crossed Push-Pull Technology®

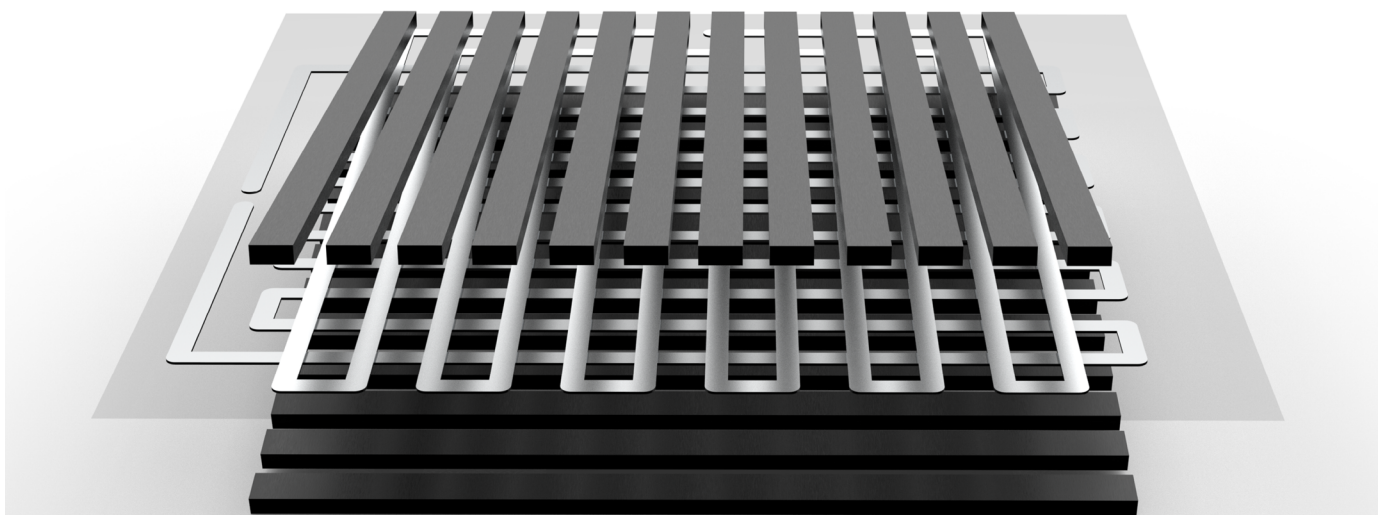
DIPTYQUE

diptyque



New exclusive patent  
Crossed Push-Pull Technology ®

Higher efficiency  
Linearity of low frequencies  
Zero distortion



Cros et nos amis mélomanes ont été subjugués par le réalisme du son reproduit par les diptyque référence. Nous avons concrétisé notre rêve. Nous vous invitons à venir les découvrir et partager de sublimes émotions sonores lors des prochains salons : le High End de Munich et Haute Fidélité à Paris.

Puissance admissible 300W amplificateur recommandé >60W  
Dimensions du panneau (h,l,e) 1800x650x44 mm  
Poids du panneau seul 75Kg

**HIGH END MUNICH 2022**

### CARRACTÉRISTIQUES TECHNIQUES

Nombre de voies 3,5 Tweeter / Medium /  
Médium Bas / Bass  
Rendement 89db/1W/1m  
Impédance 4 Ohms  
Bande passante 22 - 24000 Hz

High End Munich 2022 - Hall 2 Stand G07 -  
avec Kora et O2A  
[www.diptyqueaudio.com](http://www.diptyqueaudio.com)







# LAB 12

## VALVE SPECIALIST LAB 12 AT MUNICH 2022

# LAB 12

**F**or all of us any occasion that will bring us together once again with friends and familiar faces, sounds like a fantastic idea. Especially after the last two years when we had to prioritize our and our people's health and life, so more or less we stayed inside forgetting about meeting in person and even hugs and handshaking.

### HIGH END MUNICH 2022

Even better when this specific occasion is High End Munich, the biggest annual celebration of Audio in one of the greatest exhibition centres and most beautiful cities of Europe, with plenty of wurst and bier! Amplifiers, DACs, turntables,

speakers and cables will be there but, more than this, there will be people to see, discuss and have fun with. All of us that share the same, passion for music and HiFi equipment will be together at the MOC Munich again!

### LAB12

The Lab12 team will also be there at booth L01 in Hall 3, just near the main entrance and we can't wait to meet you there to chat and introduce you our familiar and new audio gear.

### VACUUM TUBES

The Lab12 audiophile designs are a complete range orientat-

# LAB 12

emotion thru sound





**LAB 12**

emotion thru sound



**LAB 12**

emotion thru sound





LAB 12

emotion thru sound



**LAB 12** ————— emotion thru sound —————





ed on vacuum tubes. There are many choices of amplification units, from those with a few watts for the romantics to high musical power for the dynamic guys. Full tube Phono Preamplifiers with all, and then some more, required adjustments, for those with serious vinyl fetishes. The Digital to Analogue Non-Oversampling converter that wanted to be born as analogue as vacuum tubes, because there is no need not to have a real analogue sound when loving the convenience of digital goods. Our famous Power Devices will also be there as the final but very important link to any HiFi system.

### MEET US IN MUNICH!

Pass by the LAB12 booth for some candy, a hello, and a smile, they are so important for all of us. Meet you there!

LAB12 booth L01 in Hall 3

# LAB 12

emotion thru sound



# B.AUDIO

## FRENCH BRAND B.AUDIO AT MUNICH 2022



**V**isit B.audio's room K09 in Hall 3 to listen to an eclectic selection of music, experience the benefits of the brand's own technology and pose your questions to the team behind the brand. They will showcase their latest EX streaming DACs together with their new amplifier.

### HIGH END NEWCOMERS 2017

It's been a while since High End Munich 2017 when the B.audio brand made its first public appearance among the Newcomers selected by the High End Society. The B.audio team will be back this year in partnership with Intrada loudspeakers.

### B.AUDIO FRANCE

France-based B.audio was created after more than ten years of research and development by a family team of engineers whose professional experiences enabled them to take a fresh look at the challenges of sound reproduction. Since then B.audio's products received numerous awards from the international audiophile press.

### DIGITAL AND ANALOGUE

The sound from digital media is often perceived as harsh, although extremely detailed. On the contrary, the sound from analogue media is perceived as more natural but lacking micro-details. While many attempts have been made to



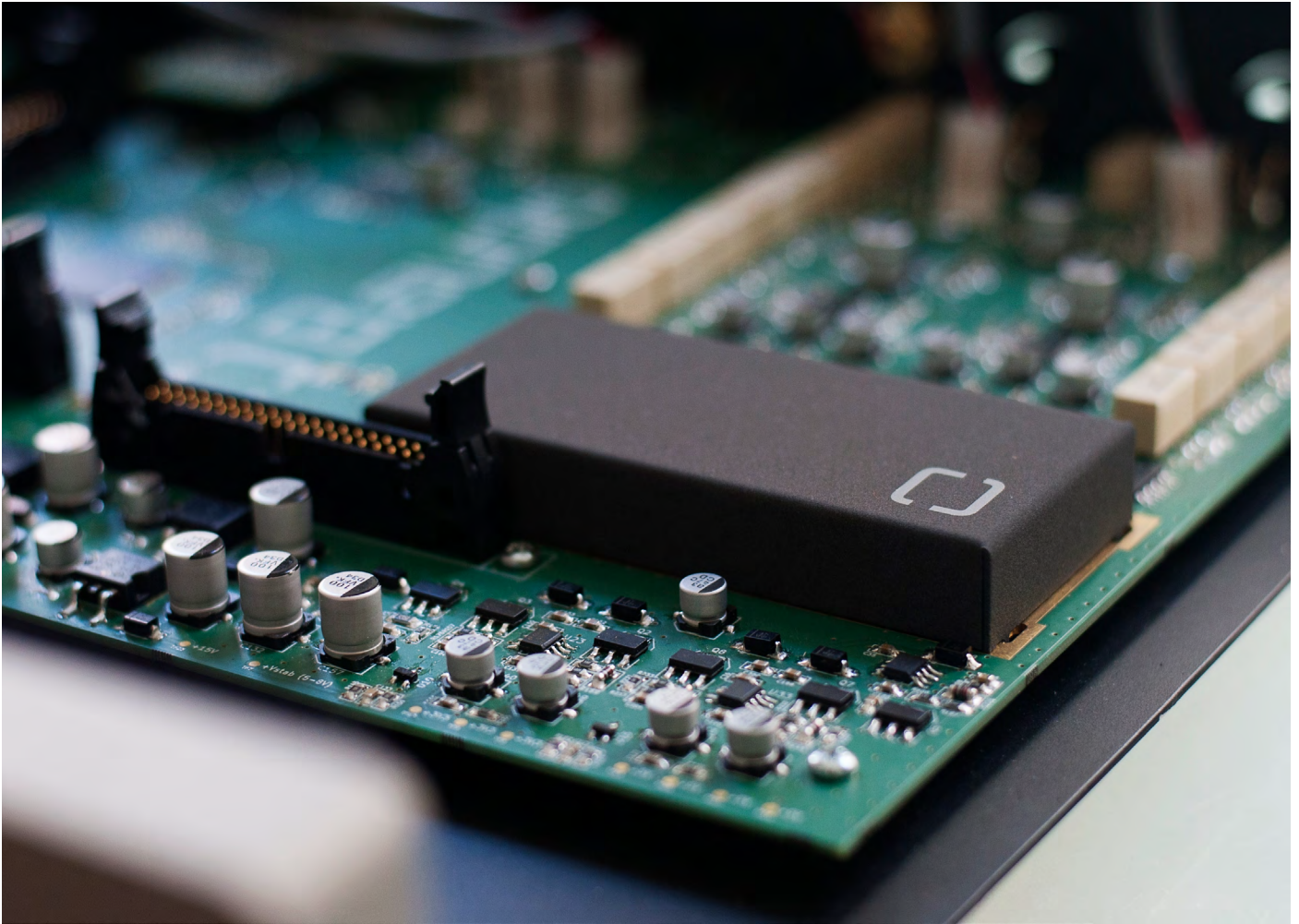
new generation  
high end audio



B.audio

new generation  
high end audio





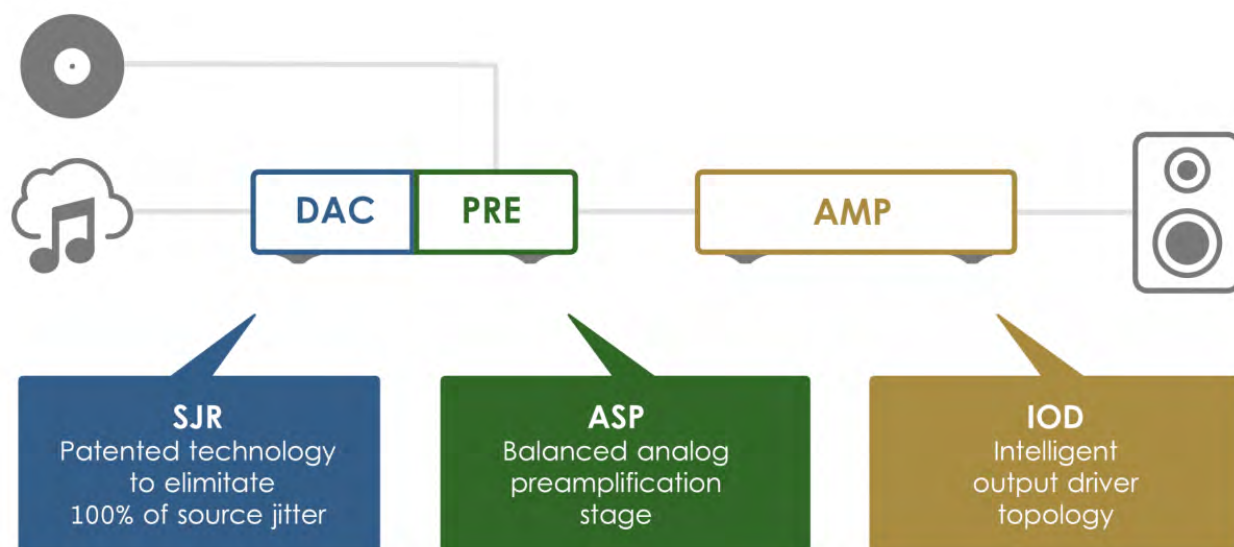
B.audio

new generation  
high end audio



B.audio

new generation  
high end audio



resolve this dilemma, the B.audio team found that none of them had proven to be completely satisfactory.

Taking full advantage of current technical possibilities, B.audio's electronics incorporate decisive technological achievements to the benefit of sound reproduction. From the ground up, all options have been explored without preconceived ideas before retaining the most relevant solutions.

## MADE IN FRANCE

B.audio's products are manufactured in France - from electronic boards to housings - in partnership with rigorously selected local suppliers. The final assembly is carried out by hand in the company's workshops located in the heart of the Alsatian vineyard.

To ensure a high level of reliability, all components used are carefully selected to retain their

optimal characteristics over time. For instance, every chemical capacitor used withstands a minimum of 5000 hours of operation at a temperature of 105°C.

## B.AUDIO REFERENCE RANGE

B.audio's reference range will be showcased at the High End show. The system will feature the following products:

- B.dpr EX: streaming DAC with full analogue pre-amplification stage
- B.amp (pair): ultra-low distortion bridgeable stereo power amplifier (class AB)

## HIGH END MUNICH 2022 LOCATION

B.audio are in booth K09 in Hall 3 of the MOC



**B.audio**

new generation  
high end audio





# JADIS

## ICONIC FRENCH BRAND JADIS AT HIGH END AND HiFi DELUXE

*Jadis*

Iconic French HiFi brand Jadis will be exhibiting at both the HiFi Deluxe and High End Munich. After two long years of absence, they are eager to share musical moments with you again.

### HIGH END MUNICH AT THE MOC

Come to visit us at the MOC Atrium 4.2 E228 to listen to our well-known JA80 in combination with Alsyvox ribbon speakers ...a great synergy to discover.

The Jadis JA80 was our first model of monoblock amplifier originally manufactured in 1983, our flagship amplifier which is still magical nearly 40

years later. The Jadis JA80 was heralded at the time as “the new reference of tube amplifiers” by the HiFi press, ‘which just happened to be French’.

In the early 80s, it was very difficult to break into a market dominated by the arrival of the transistor. But the Jadis founders were convinced about tube superiority. A technology hard to implement but which rewards the efforts made when schematic design and strict component selections are carefully made with an artistic hand.

### FRENCH TRADITION

Since 1983, the Jadis man-

[www.jadis-electronics.com](http://www.jadis-electronics.com)

MADE IN FRANCE



JADIS



[www.jadis-electronics.com](http://www.jadis-electronics.com)

MADE IN FRANCE





## JADIS



ufacturing method has always remained the same, maintaining tradition, and ensuring quality with always an eye to the future for the best innovative components. Each piece is entirely hand made in situ in Villedubert in the South of France from, point-to-point wiring to transformer winding. The transformers are entirely designed and produced following a unique winding method, kept secret by the Jadis craftspeople. As the famous quote says, "if you want it done right, you've got to do it yourself. All around the world, the audiophile community agrees that transformer is the centrepiece of the amplifier having a great impact on the final restitution of the audio signal.

### MODERN MASTERPIECE

Back to the 21st century now, let's talk about our newcomer, our integrated amplifier the Jadis I70 integrated amplifier 'a modern-day jewel' as Jean Marie Daperi from Haute Fidélité magazine said. Stuart Smith, Editor of Hifi Pig gave it his 'Editors Choice' award and said he was 'once bitten, forever smitten' and that the Jadis I70 was 'absolutely wonderful and ticks all the right emotional connection boxes for me'.

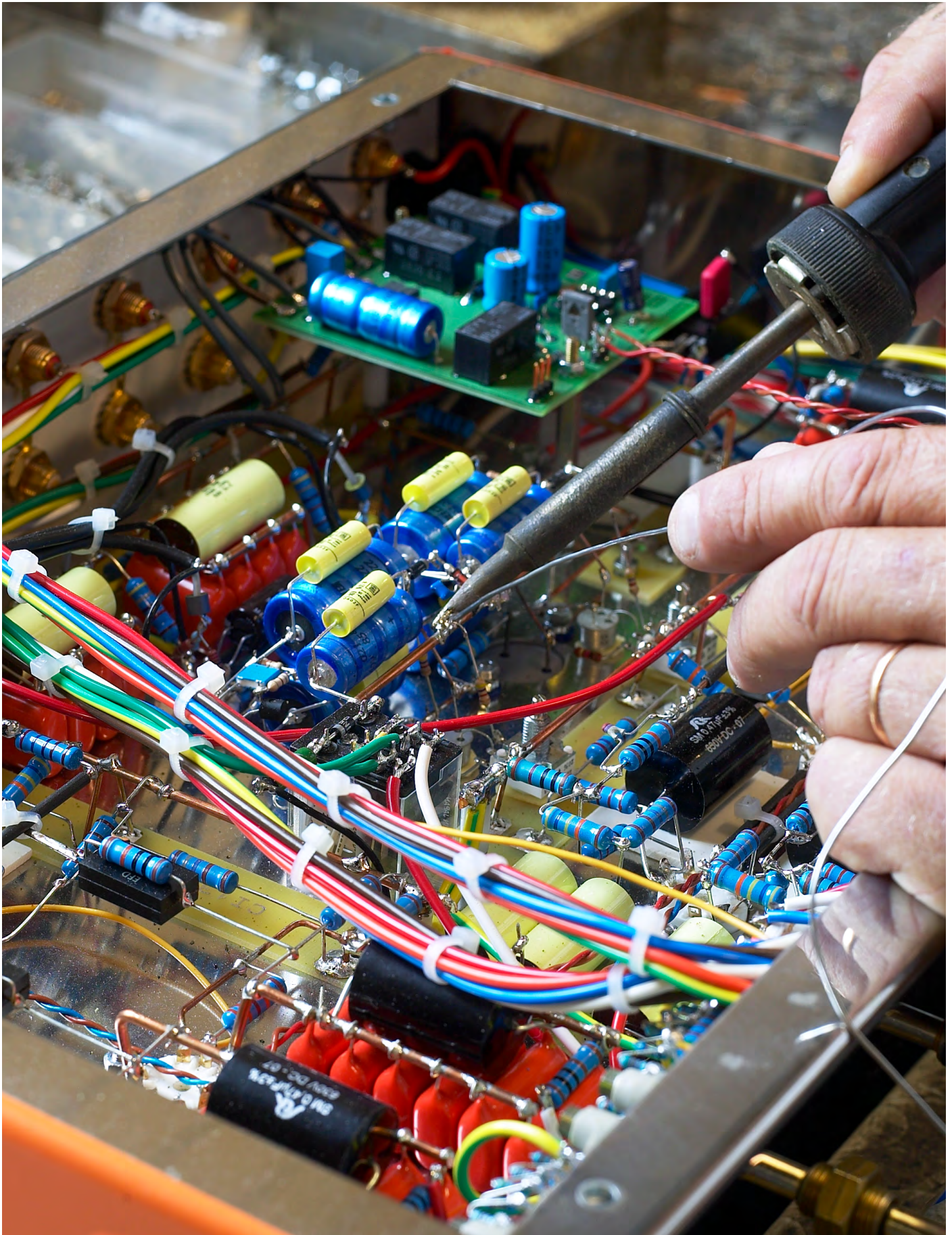
The launch of the KT170 valve gave Jadis the idea for the I70 as they had long been considering developing a new integrated amplifier, mixing compact design and increased performance. New research for power and output transformers was studied to meet the I70 needs which incorporates several Jadis monoblock technical specificities.

[www.jadis-electronics.com](http://www.jadis-electronics.com)

MADE IN FRANCE







[www.jadis-electronics.com](http://www.jadis-electronics.com)

MADE IN FRANCE





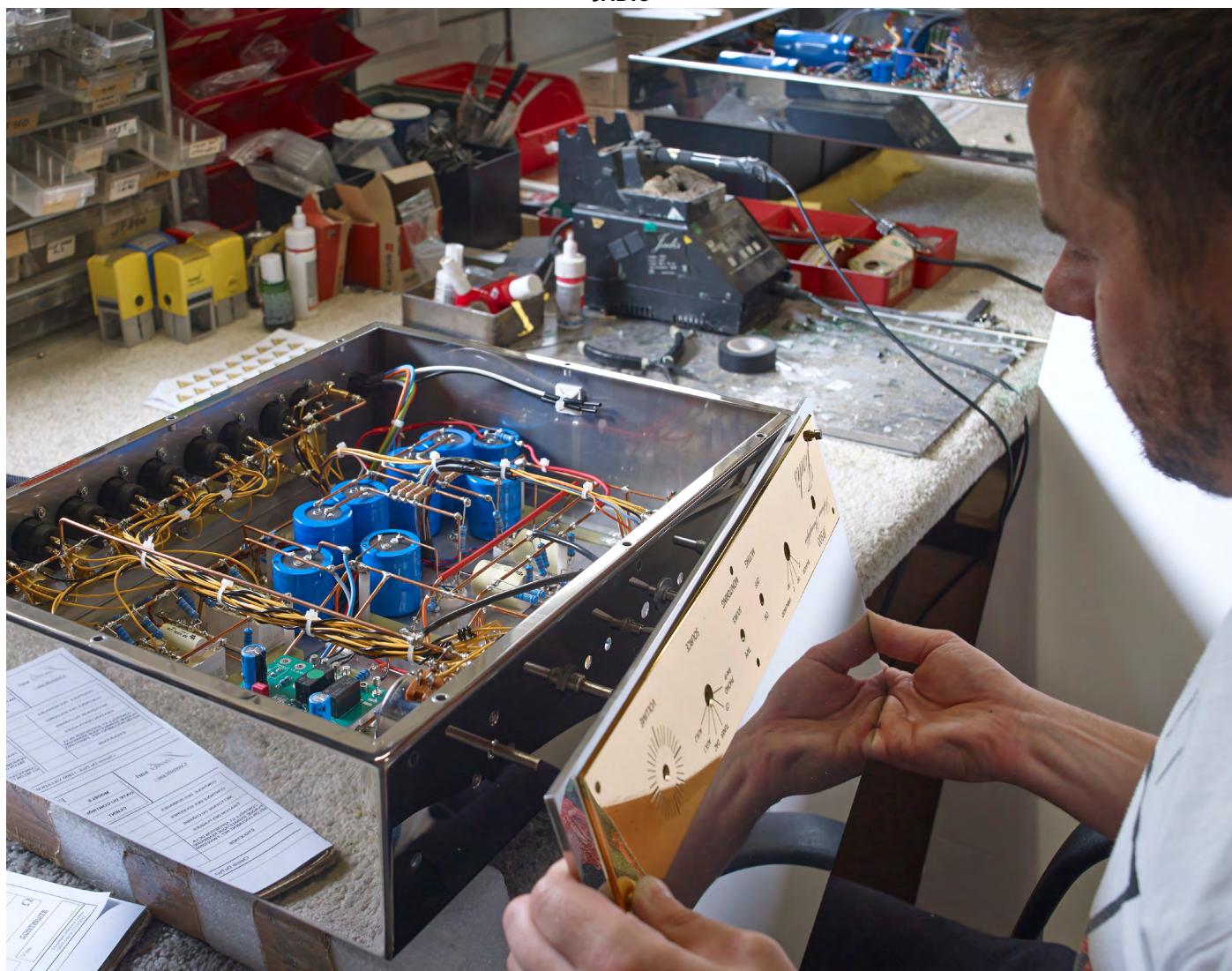
JADIS



[www.jadis-electronics.com](http://www.jadis-electronics.com)

MADE IN FRANCE





As Jean Marie Daperi said of the Jadis I70, 'music spreads out naturally in space with voluptuousness and offers an extra touch of soul to the music, making it inevitably gorgeous, emotional and terribly lively...'

## HIFI DELUXE

At the HiFi Deluxe show at the Munich Marriott hotel, you will find Jadis with a different atmosphere, in studio 7 with a complete Jadis set-up composed of their well-known JA30MKII mono-blocks, JP80MC preamplifier, I70, HESTIA turntable Orphée CD player and Audioplan Konzert 4 loudspeakers.

Last but not least, this is where Jadis will unveil

their current project, the new Jadis I-300, an integrated amplifier with 300B tubes that will debut on static display.

See you there!

## VISIT THE JADIS AT BOTH SHOWS

High End Munich and the HiFi Deluxe, why not take the free shuttle bus between the two shows.

MOC Atrium 4.2 E228 and HIFI DELUXE studio 7

[www.jadis-electronics.com](http://www.jadis-electronics.com)

MADE IN FRANCE







# AUDIO GROUP DENMARK

## ANSUZ, AAVIK & BØRRESEN AT MUNICH HIGH END



When you visit the stand of Ansuz, Aavik and Børresen at the HiFi fairs around the world, you can always expect to be amazed, surprised and enlightened. This will be especially the case at this year's High End Show in Munich. Ansuz, Aavik, and Børresen Acoustics were founded by Lars Kristensen and Michael Børresen. These three brands share a common DNA and a common audio philosophy that have evolved from many years of collaboration. At the end of 2020, Audio Group Denmark was established to act as the umbrella company for all three brands.

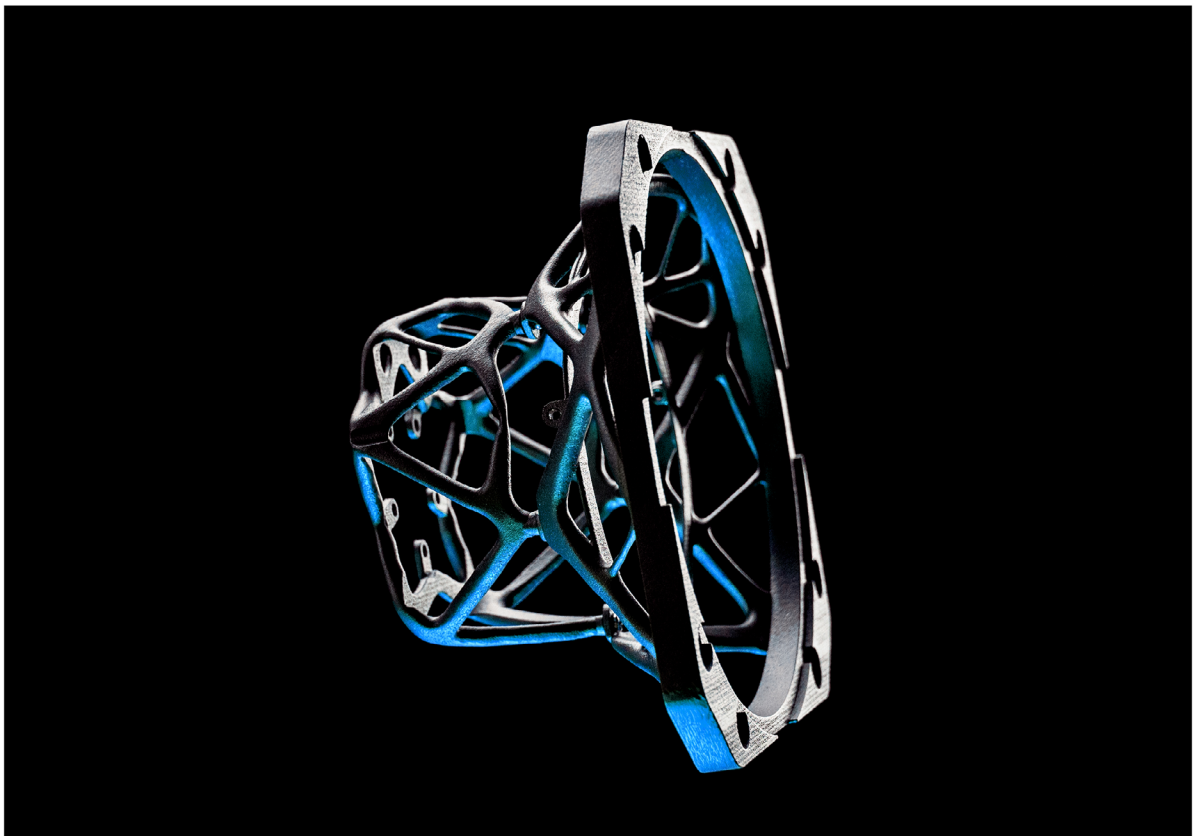
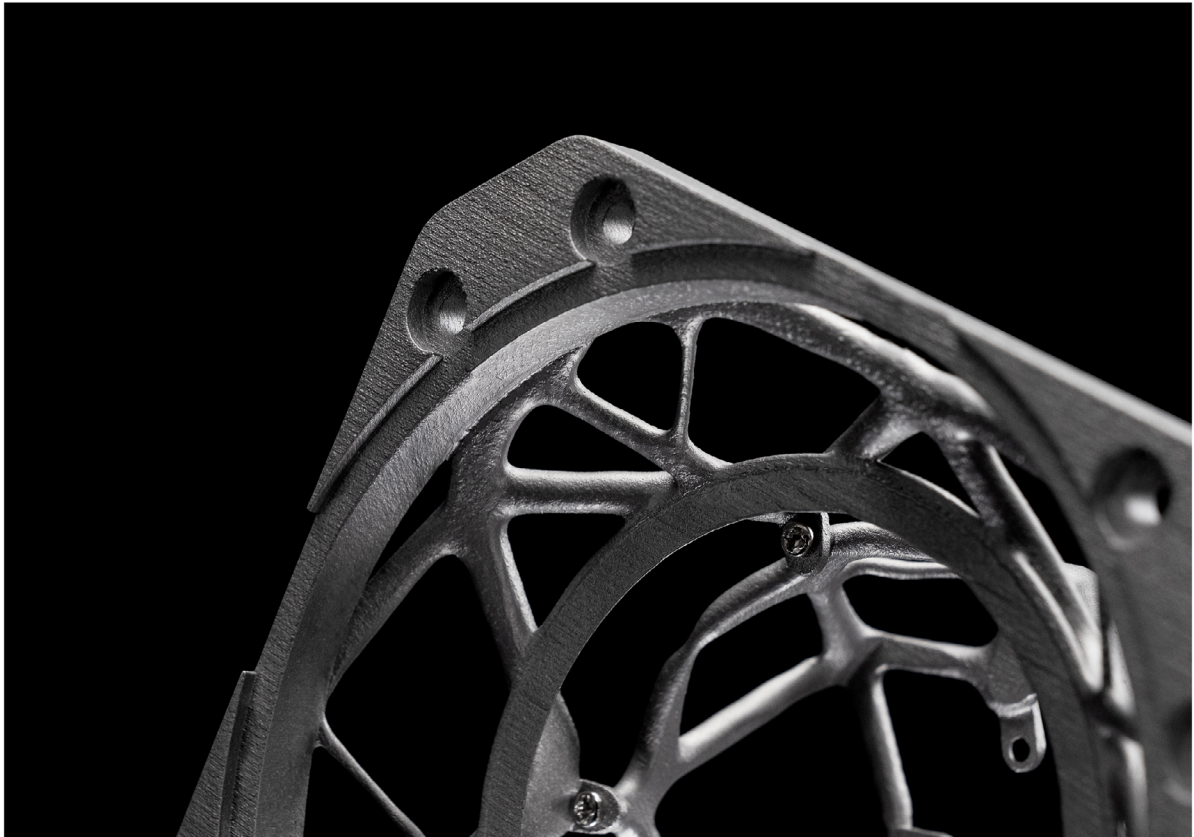
Audio Group Denmark's philosophy and mission is to bring music closer to people by creating access to great, authentic, and emotional music experiences. They believe that everyone deserves such moments, and we are strongly committed to this wonderful and exciting passion for high-end music. That's why they constantly strive for the ultimate in pristine sound quality. It is this unadulterated music experience that they want to share with the rest of the world. At the High End Show in Munich, Audio Group Denmark will present and demonstrate a wide range of new and highly innovative products.

**AUDIO GROUP DENMARK**

Audio Group Denmark is a









## AUDIO GROUP DENMARK

company known for its creativity and innovative approach. After a two-year absence from the High End Show in Munich due to covid-19, this means that this year Audio Group Denmark will be showcasing even more exciting, newly launched products, prototypes of upcoming products, and world premieres than ever before.

### AAVIK 880 AMPLIFIER- FIRST CLASS, CLASS A

With Michael Børresen's innovative approach and Flemming Erik Rasmussen's artistic and aesthetic design, Aavik has created a new Class A amplifier series. At the High End Show in Munich, they will present as a world premiere our new Aavik 880 amplifier, a pure 200W per channel Class A amplifier. Aavik has developed this Class A amplifier series based on the firm belief that Class A amplifiers have the greatest power potential of any amplifier class. However, this requires a Class A amplifier that does not switch. The new 880 features all the non-switching characteristics of an output stage. That's why, for the new Aavik 880 series, we designed a Class A power amplifier that stays in Class A no matter how hard it is loaded and no matter how hard it is driven. This means that the need for inductive output filtering is simply much less, and the result is much better. In addition, the Aavik 880 amplifiers features a resonance-optimized titanium/copper enclosure design, a unique microprocessor-controlled LDR volume control, a unique switch-less input circuitry for the preamp stages, and a 1kW resonant power supply. The visual design of this new amplifier series is also quite different from what Aavik has done before. The beautiful and creative pencil strokes of Flemming Erik Rasmussen leave his clear signature.

### THE M1 LOUDSPEAKER - NEW, GROUND-BREAKING DRIVER TECHNOLOGY

Michael Børresen has also been involved in the product development of new ground-breaking loudspeaker series. The result is, among other

things, the new Børresen M1 loudspeakers. As is now well known, Børresen Acoustics has been very much inspired by the detail-oriented and thorough approach as well as the technologies from Formula 1 racing in the development of the new loudspeakers. The result of this approach is the implementation of Formula 1 technology in the new M1 speakers, in the form of a performance-optimized speaker cone with a 4-layer process consisting of: 0.04 mm surface-treated titanium skin, Spread Tow Carbon, Nomex honeycomb and again Spread Tow Carbon.


In addition, the Børresen development team has further optimized the speaker basket. This innovative process has resulted in a 3D-printed, topology-optimized zirconium driver basket. The new M1 also features all the benefits of the Børresen 0 Series. These include the patented iron-free Børresen magnet motor system, which has now been further refined. Since silver has been found to have the highest specific electrical conductivity of all metals, Børresen has replaced the copper pole rings with hand-made silver rings, manufactured in-house. This has lowered the inductance to an amazingly low level that has never been achieved before.

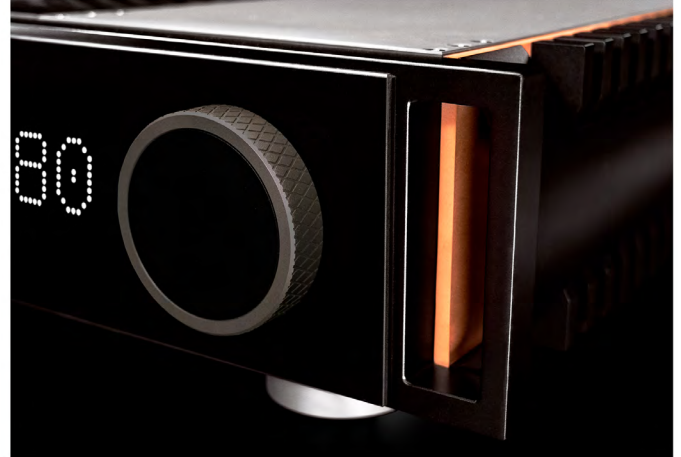
### GOLD SIGNATURE - READY FOR A GOLD RUSH?

Ansuz has always been a pioneer in the development of high-end audio cables, and they have always strived for the ultimate in pristine sound quality and musical authenticity. In this quest to unlock the full acoustic potential of music, our latest initiative is the launch of a new cable series called Ansuz Gold Signature. This cable series features the most sophisticated and advanced Ansuz technologies for noise reduction and resonance control and is equipped with Ansuz Tesla and Dither technologies. The cables feature a highly optimized anti-area antenna design to reduce interfering noise. In addition, the cables receive a special gold/silver/copper alloy for the 24-karat gold-plated





 **SEE YOU IN MUNICH**







conductors. All of this is said to provide refined authenticity and a lifelike musical experience. At the Munich High End, Ansuz will give an exciting insight into the performance potential of this new Gold Signature cable series.

### THE BØRRESEN X LOUDSPEAKER SERIES

Finally, Børresen has been working on another new and exciting speaker project, the Børresen X Speaker Series. These speakers represent a revolution in their price range. They have been developed on the solid foundation of Børresen Acoustics' tradition, philosophy and know-how. The X speakers will feature carbon fiber reinforced cabinets, state-of-the-art drivers, Spread Tow Carbon and honeycomb cones. Michael Børresen and his development team will of

course be present in Munich to reveal more exciting details about this new speaker series, just as they will with the new upcoming M1 speakers.

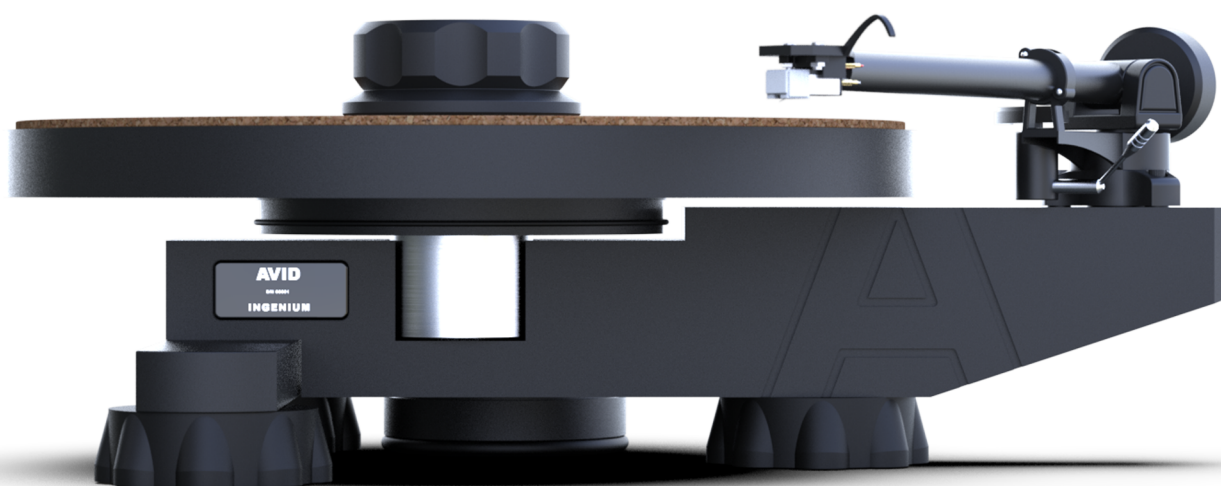
### WHERE TO FIND US IN MUNICH

You can find Ansuz, Aavik and Børresen in Hall 4 T04 and U03, located near the main entrance. Their entire sales team, including Lars Kristensen, and representatives from the design and development team, including Michael Børresen and Flemming Erik Rasmussen, will of course be present.

Learn more about Ansuz, Aavik, and Børresen Acoustics at [www.audiogroupdenmark.com](http://www.audiogroupdenmark.com)



# WIN AN AVIDHIFI INGENIUM TURNTABLE IN OUR FREE TO ENTER COMPETITION



## HERE'S WHAT YOU NEED TO DO TO BE IN WITH A CHANCE OF WINNING.

If you are lucky enough to be attending High End Munich 2022 then all you need to do is go to the HiFi Pig Selfie Tower outside entrance 1 of the MOC, take a selfie next to the Tower and post your image to Facebook with the hashtag **#HiFiPig**

If you aren't fortunate enough to be able to attend don't worry, you still have a chance of winning this wonderful turntable. Simply print off the HiFi Pig Loves You! poster, take a selfie with it and post it to Facebook with **#HiFiPig** ([Get Your Poster Here](#))

### IMPORTANT

Get your friends and family to share your post – the more your post is shared on social media, the more chance there will be of you being the winner!

### TO RECAP

1. GO TO THE HiFi Pig SELFIE TOWER OR PRINT OFF THE HiFi Pig LOVES YOU! POSTER
2. TAKE A SELFIE
3. SHARE ON FACEBOOK WITH THE HASHTAG **#HiFiPig**
4. GET FRIENDS AND FAMILY TO SHARE YOUR POST
5. KEEP YOUR FINGERS CROSSED THAT YOU WIN



#### TERMS AND CONDITIONS

The winner will be chosen at random from the posts on Facebook with the hashtag HiFiPig (**#HiFiPig**). The winner will be chosen on the Saturday 28th May 2022 at 12:00 CET and will be notified within 24 hours through their social media account. If there is no response within 72 hours we will randomly select another winner from the entrants.

The prize will be sent from the UK by the manufacturer (AVID-HIFI). The winner will be responsible for any import duties and fees incurred.

No Cash Alternative.

The judges' decision is final.

HiFi Pig and Big Pig Media LLP reserve the right to use the winner's photograph/selfie for promotional purposes.



## THE HiFi PiG SELFIE TOWER

**T**o mark HiFi Pig's tenth anniversary of "Snoofling Out What's Hot in HiFi" we have had built a 4m tower outside Entrance 1 of the MOC.

### TAKE A SELFIE & WIN

The HiFi PiG SELFIE TOWER, as it's name suggests, is a great place to take commemorative photographs and selfies of the 2022 High End Munich exhibition. Even better, if you share your SELFIE on Facebook with the hashtag HiFiPiG (#HiFiPig) you could be in with a chance of winning a fabulous

INGENIUM turntable from our friends at AVIDHIFI -See our promotional advertisement.

### A GREAT PLACE TO MEET

Being huge, thrusting and **PiNK**, the HiFi PiG SELFIE TOWER is easy to find and a great place to meet friends.

If you get lost, why not arrange to meet at the HiFi PiG SELFIE TOWER?





# THE HiFi PiG SELFiE TOWER

